

# SAVIN®

## C2828/C3333

Color Digital Imaging System

VERSATILE > PRODUCTIVE > FLEXIBLE > RELIABLE > **VIBRANT >**



**High-quality color for any application.**



## Enhance productivity for color and black & white.

Based on an award-winning design, the fast and versatile SAVIN® C2828/C3333 give your organization an easy, affordable way to bring the power of color to business-critical documents. Both deliver high-quality color for vivid results in a wide range of applications and provide fast, precise black & white output.



Find the features and functions you need in seconds with the large, easy-to-navigate, full-color W-VGA Control Panel with Simplified Display and animated user guidance.

They can be configured with tools to optimize workflow, from scanning and faxing to finishing and color management. That means the Savin C2828/C3333 offer an ideal way to make a significant impact on productivity, reduce outsourcing and add convenient multifunctional capabilities to any office.

# C2828/C3333 Color Digital Imaging System

**VERSATILE > PRODUCTIVE > FLEXIBLE > RELIABLE > VIBRANT >**

## Superior Speed for Your Workflow

Depend on these go-to systems for exceptional speed and efficiency in any environment, as well as capabilities that reduce turnaround time.

- Complete presentations, spreadsheets and other jobs quickly with output speeds of 28 or 33 pages-per-minute for both full-color and black & white documents.
- Get the documents you need faster. The C2828/C3333 deliver the first color copy in just 8.0 seconds or 5.0 seconds for black & white. They also have short warm-up and recovery times from Off/Sleep mode.
- Process large color files and other complex print jobs in record time with a powerful 600 MHz controller, 1 GB RAM and a standard 80 GB Hard Disk Drive.
- Support site-specific networking requirements using a variety of standard and optional interfaces. Both systems are also compatible with many operating environments, including UNIX, AS/400, Macintosh and Windows Vista.

## Standout Color Quality

Whether you only need occasional color for critical documents or a color device that can handle heavier workloads, the Savin C2828/C3333 use patented PxP™ Toner and a powerful print engine to ensure amazing results on every page.

- Generate bold, high-quality color documents with resolutions up to 1200 x 1200 dpi.
- Reduce the need for expensive outsourcing by enabling your team to get creative and produce more full-color documents in-house.
- Create the right image for your organization. Professional color documents help you gain attention, persuade customers and make key messages more memorable.

## Flexible Paper Handling

With extensive options for paper handling and finishing, the versatile C2828/C3333 can produce an incredibly wide range of documents.

- Print on a variety of sizes and stocks to produce three-hole-punched reports, oversized postcards, spreadsheets, presentations, and more. Both systems support output up to 12" x 18" (through the Bypass Tray) and accept heavy stocks (up to 140 lb. Index).
- Eliminate manual collation and stapling using the optional 500-Sheet Finisher or 1,000-Sheet Finisher with conventional stapling, or the 1,000-Sheet Booklet Finisher with saddle-stitching and optional hole-punching.
- Run long jobs without interruption with a standard paper capacity of 1,200 sheets.
- Increase paper capacity with a 1 x 550-Sheet or 2 x 550-Sheet Paper Bank, or the 2,000-Sheet Tandem Large Capacity Tray (LCT). You can also add the 1,200-Sheet Side LCT for a maximum paper capacity of 4,400 sheets.

## Ease Of Use



Changing toner is so easy, it can be done with one hand.

## Professional Finishing



With fast color output and professional finishing, you can eliminate manual collation and stapling, and minimize the need for outsourcing.



## Advanced Document Management

The Savin C2828/C3333 include advanced scanning, faxing and other capabilities that have become essential elements of daily document workflow.

- Send documents to any destination quickly and easily. *Scan-to* functions include Scan-to-Email for rapid delivery, Scan-to-Folder for automated archiving, Scan-to-Media (USB/SD) for instant document portability and Scan-to-URL to minimize network traffic.
- Send and receive fax documents electronically with Internet (T.37) faxing, use LAN faxing to transmit faxes directly from a PC without leaving your desk, or distribute documents quickly with IP (T.38) and conventional Super G3 faxing.
- Minimize errors and ensure faxes reach their intended recipients. Both systems detect blank pages and enable users to double-check fax destinations before transmission.
- Print a PDF or JPEG attachment by simply sending an e-mail to the system using the innovative Mail-to-Print feature.

- Get incoming faxes no matter where you are by redirecting incoming faxes to an e-mail address or network folder. This also eliminates lost hard copy faxes.
- Minimize file size, reduce network traffic and maintain exceptional image quality for scanned color documents with the standard High Compression PDF feature.

## Advanced Color Control

Maintain precise, professional control over color management with the optional EFI Fiery™ Controller.

- Leverage all the full-color capabilities of these systems' print engines, including graphics-intensive applications and accurate spot color.
- Adjust color output to suit a variety of application-specific needs with intelligent color management. Get the results you expect whether you are printing RGB, CMYK or even PANTONE® colors.
- Use this high-end controller for additional full-color firepower to print complex color documents efficiently and accurately, time after time.

## End-To-End Solutions

Adding the C2828/C3333 to your office means you gain access to a broad portfolio of seamlessly integrated software solutions from Savin and a long list of partners.

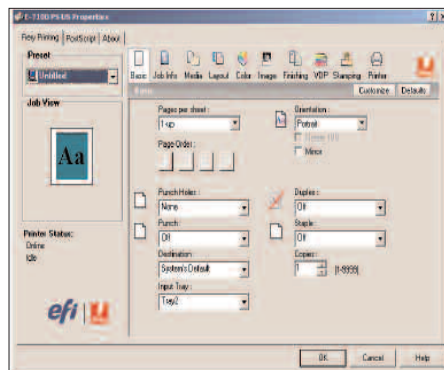
- Incorporate proven Savin solutions for document capture and distribution, storage and management, variable data printing, assessment and cost recovery, device management and print security. These offerings are designed to work with Savin MFPs, transforming them into true document portals.
- Leverage the smartest, most effective workflow tools and streamline every aspect of your organization with Savin. We partner with industry-leading technology innovators to make sure our MFPs can serve as on-ramps to an extensive selection of applications for content management and other business-critical activities.
- Develop customized applications for the C2828/C3333 using Embedded Software Architecture™, a Java-compatible Software Development Kit (SDK).

## Scan To Removable Media



Scan files directly to removable media, such as an SD card or USB flash drive, for instant portability.

## EFI Fiery™ Controller



The optional EFI Fiery™ Controller is ideal for users who need greater control over color management and precise spot color matching.

## Flexible Document Distribution



Fast, high-resolution scanning is the starting point for flexible global document distribution.

# C2828/C3333 Color Digital Imaging System

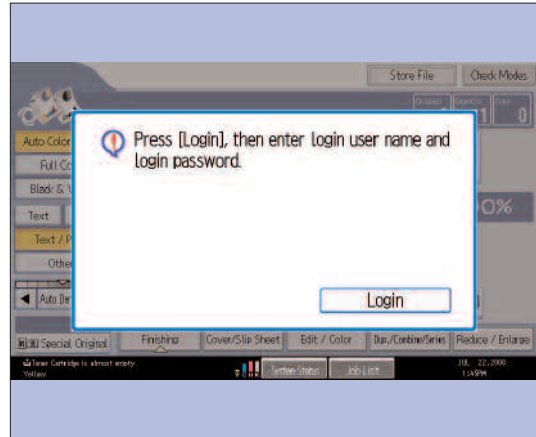
VERSATILE > PRODUCTIVE > FLEXIBLE > RELIABLE > VIBRANT >

## Solution Partners



Savin solution partners include all of these organizations, and many more.

## Security



User authentication and other security features help protect your documents, your network and the device itself.

## Cost-Effective Operation

With exceptional productivity, high reliability and low total cost of ownership (TCO), these systems protect your investment.

- Expect maximum uptime and reliability from these systems, which are designed for heavy office workloads.
- Made for cost-conscious users, the Savin C2828/C3333 make it affordable to bring color into your workflow. User authentication lets you control access to color, manage costs and prevent abuse.

## Simple and Secure

When you connect the Savin C2828/C3333 to your network, you will discover they are highly secure and extremely easy for administrators to manage.

- Handle a long list of common management tasks remotely. Managers can view detailed system information, network settings and supply status right from a standard Web browser.
- Defend against data interception with encrypted PDF transmission, which encrypts PDF data for Scan-to-Email and Scan-to-Folder applications.
- Restrict access to specific system functions (such as scanning or color copying) with several levels of user authentication.
- Protect confidential data. Use the DataOverwriteSecurity System (DOSS) option to automatically overwrite hard drive data after each copy, scan, fax and print job. Or use optional HDD encryption to protect data even if the hard drive is removed or stolen.



## Your Environmental Partner

Savin continues its long-standing commitment to developing office solutions with environmentally friendly and superior energy- and supply-saving features, without compromising productivity, including:

- Power-Saving Sleep Mode
- Duplex and Combine Copy Modes
- Energy-Saving PxF™ Toner
- Low Noise Levels
- Minimal Ozone Emissions
- Restriction of Hazardous Substances (RoHS) Compliant



## Versatile, Innovative Color Capabilities

### Internal Shift-Sort Tray (Optional)

If no finisher is installed, add the Internal Shift-Sort Tray to collate document sets.

### 125-Sheet Inner One-Bin Tray (Optional)

Provides a cost-effective way to separate copy output from print and fax output.

### Finishers (Optional)

The Savin C2828/C3333 can be equipped with a 500-Sheet or 1,000-Sheet Finisher for traditional stapling, or a 1,000-Sheet Booklet Finisher (shown) that creates professional-quality booklets and offers optional hole-punching.

### Paper Trays

Two standard front-loading Paper Trays each hold 550 sheets.

### Paper Sources (Optional)

Add an optional Cabinet Stand, 1 x 550-Sheet Paper Bank (Caster Table required), 2 x 550-Sheet Paper Bank (shown) or the 2,000-Sheet Tandem Large Capacity Tray for maximum versatility. All sources accept stocks up to 140 lb. Index.



# C2828/C3333 Color Digital Imaging System

**VERSATILE > PRODUCTIVE > FLEXIBLE > RELIABLE > VIBRANT >**

**50-Sheet Automatic Reversing Document Feeder (Standard)**  
Easily handles simplex and duplex originals up to 11" x 17".

**Automatic Stackless Duplexing (Standard)**  
Produces cost-saving two-sided booklets, brochures, presentations, and more.

**Bypass Tray**  
With the 100-Sheet Bypass Tray, total standard paper capacity is 1,200 sheets.

**1,200-Sheet Side Large Capacity Tray (Optional)**  
Boosts maximum paper capacity to 4,400 sheets when installed with the 2,000-Sheet Tandem Large Capacity Tray.

## OPTIONAL HARDWARE ACCESSORIES

### Two-Tray Paper Bank (PB3040)<sup>1</sup>

Paper Capacity 1,100 sheets (550 x 2)  
Paper Sizes 7.25" x 10.5" – 11" x 17"  
Paper Weights 16 – 67 lb. Bond/140 lb. Index (60 – 256 g/m<sup>2</sup>)  
Dimensions (WxDxH) 22.8" x 24.4" x 10.2"  
Weight Less than 57 lbs.

### One-Tray Paper Bank (PB3080)<sup>1</sup>

Paper Capacity 550 sheets (550 x 1)  
Paper Sizes 7.25" x 10.5" – 11" x 17"  
Paper Weights 16 – 67 lb. Bond/140 lb. Index (60 – 256 g/m<sup>2</sup>)  
Dimensions (WxDxH) 22.8" x 24.4" x 4.7"  
Weight Less than 33 lbs.

Requires Caster Table.

### Tandem Large Capacity Tray (LCT) (PB3050)<sup>1</sup>

Paper Capacity 2,000 sheets (1,000 x 2)  
Paper Sizes 8.5" x 11" LEF  
Paper Weights 16 – 67 lb. Bond/140 lb. Index (60 – 256 g/m<sup>2</sup>)  
Dimensions (WxDxH) 22.8" x 24.4" x 10.2"  
Weight Less than 57 lbs.

### FAC33 Cabinet Stand<sup>1</sup>

#### Side Large Capacity Tray (LCT) (RT3000)

Paper Capacity 1,200 sheets  
Paper Sizes 8.5" x 11" LEF  
Paper Weights 16 – 58 lb. Bond/80 lb. Cover (60 – 216 g/m<sup>2</sup>)  
Dimensions (W x D x H) 13.7" x 21.3" x 11.4"  
Weight Less than 31 lbs.

Requires Two-Tray Paper Bank (PB3040) or Tandem LCT (PB3050).

### 1,000-Sheet Booklet Finisher (SR3000)<sup>2</sup>

Paper Sizes 5.5" x 8.5" – 11" x 17", 12" x 18"  
Paper Weights Upper Proof Tray: 14 – 28 lb. Bond (52 – 105 g/m<sup>2</sup>); Lower Shift Tray: 14 – 68 lb. Bond/140 lb. Index (52 – 256 g/m<sup>2</sup>)  
Stack Capacity Upper Proof Tray: 100 sheets (8.5" x 11" or smaller), 50 sheets (8.5" x 14" or larger); Shift Tray: 1,000 sheets (8.5" x 11" or smaller), 500 sheets (8.5" x 14" or larger); Booklet Tray: 20 sets (2 – 5 sheets/set, all sizes, saddle-stitched) or 10 sets (6 – 10 sheets/set, all sizes, saddle-stitched)

Staple Capacity 50 sheets (8.5" x 11"), 30 sheets (8.5" x 14" or larger)  
Saddle Stitch 10 sheets (up to 40 pages)  
Staple Paper Sizes 8.5" x 11" to 11" x 17" (Normal Staple)  
8.5" x 11", 8.5" x 14", 11" x 17" (Saddle Stitch)

Staple Paper Weights 17 – 24 lb. Bond (64 – 90 g/m<sup>2</sup>)  
Staple Positions 1 staple/2 positions; 2 staples/3 positions  
Dimensions (WxDxH) 21.1" x 23.7" x 36.7"  
Weight Approx. 105.9 lbs. without Punch Unit Option;  
Approx. 110.3 lbs. with Punch Unit Option

2/3-Hole Punch Unit Option available for Booklet Finisher.

Cannot be installed with One-Tray Paper Bank (PB3080).

### 1,000-Sheet Finisher (SR790)<sup>2</sup>

Paper Sizes 5.5" x 8.5" – 11" x 17"  
Paper Weights Proof Tray: 14 – 68 lb. Bond/140 lb. Index (52 – 260 g/m<sup>2</sup>); Shift Tray: 14 – 43 lb. Bond/90 lb. Index (52 – 163 g/m<sup>2</sup>)  
Stack Capacity Proof Tray: 250 sheets (8.5" x 11" or smaller), 50 sheets (8.5" x 14" or larger); Shift Tray: 1,000 sheets (8.5" x 11" or smaller), 500 sheets (8.5" x 14" or larger)

Staple Capacity 50 sheets (8.5" x 11"), 30 sheets (8.5" x 14" or larger)  
Staple Paper Sizes 8.5" x 11" – 11" x 17"  
Staple Paper Weights 17 – 24 lb. Bond (64 – 90 g/m<sup>2</sup>)  
Staple Positions 1 staple/2 positions; 2 staples/1 position  
Dimensions (WxDxH) 10.7" x 20.5" x 31.2"  
Weight 55.2 lbs.

Cannot be installed with One-Tray Paper Bank (PB3080).

### 500-Sheet Finisher (SR3050)<sup>2</sup>

Paper Sizes 5.5" x 8.5" – 11" x 17"  
Paper Weights 14 – 42 lb. Bond (52 – 157 g/m<sup>2</sup>)  
Stack Capacity 500 sheets (8.5" x 11" or smaller)  
250 sheets (8.5" x 14" or larger)

Staple Capacity 50 sheets (8.5" x 11"), 30 sheets (8.5" x 14" or larger)  
Staple Paper Sizes 8.5" x 11" – 11" x 17"  
Staple Paper Weights 14 – 42 lb. Bond (52 – 157 g/m<sup>2</sup>)  
Staple Positions 1 staple/4 positions; 2 staples/1 position  
Dimensions (WxDxH) 15.6" x 21.7" x 10.9"  
Weight Less than 26.5 lbs.

### Internal Shift-Sort Tray (SH3040)

Paper Sizes 5.5" x 8.5" – 12" x 18"  
Paper Weights 14 – 68 lb. Bond/140 lb. Index (52 – 256 g/m<sup>2</sup>)  
Paper Capacity 250 sheets (8.5" x 11" or smaller)  
125 sheets (8.5" x 14" or larger)

Weight Approx. 4.4 lbs.  
Internal Shift-Sort Tray cannot be installed with a finisher

### Inner One-Bin Tray (BN3070)

Paper Sizes 5.5" x 8.5" – 12" x 18"  
Bin Capacity 125 sheets  
Paper Weights 16 – 50 lb. Bond/90 lb. Index (60 – 169 g/m<sup>2</sup>)  
Weight Approx. 5.5 lbs.

<sup>1</sup> Either the Cabinet Stand or one of the paper options must be installed.

<sup>2</sup> Requires installation of Bridge Unit.



### GENERAL SPECIFICATIONS

|                        |   |
|------------------------|---|
| Printing Process       | Dry Electrostatic Transfer System with Dual Component Magnetic Brush Development; 4-Drum Method   |
| Output Speed           | C2828: 28-ppm BW/Full-Color (Letter), 17-ppm (Legal), 14-ppm (Ledger)<br>C3333: 33-ppm BW/Full-Color (Letter), 19-ppm (Legal), 17-ppm (Ledger)  |
| Warm-Up Time           | 29 seconds  |
| First Copy Time        | Full-Color: 8.0 sec./BW: 5.0 sec.   |
| Copy Resolution        | 600 dpi   |
| Document Feeder        | Automatic Reversing Document Feeder (ARDF) Standard   |
| Original Capacity      | 50 sheets   |
| Paper Size             | 5.5" x 8.5" – 11" x 17"   |
| Paper Weight (simplex) | 11 – 34 lb. Bond (40 – 128 g/m <sup>2</sup> )   |
| Paper Weight (duplex)  | 14 – 28 lb. Bond (52 – 105 g/m <sup>2</sup> )   |
| Exposure Glass         | Up to 11" x 17"   |
| Multiple Copies        | Up to 999 copies  |
| Copy Size              | 11" x 17" max. (full-bleed on 12" x 18")  |
| Input Capacity         | Standard: 2 x 550 sheets + 100-Sheet Bypass Tray;<br>Maximum: 4,400 sheets (w/Tandem LCT and Side LCT)  |
| Output Capacity        | Standard: 500 sheets Face Down;<br>Maximum: 1,625 sheets (with 1,000-Sheet Finisher + Inner 1-Bin Tray)   |
| Paper Sizes            | First Paper Tray: 8.5" x 11" LEF;<br>Second Paper Tray/Paper Bank: 7.25" x 10.5" – 11" x 17";<br>Bypass Tray: Width: 3.54" – 12", Length: 5.83" – 23.62"; Tandem Large Capacity Tray: 8.5" x 11" LEF;<br>Side Large Capacity Tray: 8.5" x 11" LEF                     |
| Paper Weights          | Standard Trays/Bypass Tray/Paper Banks/Tandem LCT: 16 – 68 lb. Bond/140 lb. Index (60 – 256 g/m <sup>2</sup> );<br>Side LCT: 16 – 57.5 lb. Bond/80 lb. Cover (60 – 216 g/m <sup>2</sup> );<br>Duplex Unit: 16 – 45 lb. Bond/90 lb. Index (60 – 169 g/m <sup>2</sup> ) |
| Paper Types            | Plain/recycled paper, laser printer qualified transparencies, labels, envelopes   |
| Auto Duplex            | Standard  |
| Zoom                   | 25% – 400% in 1% increments   |
| Preset Reduction       | 93%, 85%, 78%, 73%, 65%, 50%, 25%   |
| Preset Enlargement     | 400%, 200%, 155%, 129%, 121%  |
| Dimensions (WxDxH)     | 26.4" x 26.4" x 30" (standard configuration)<br>Less than 265 lbs. (120 kg) (w/ARDF)  |
| Weight                 |   |
| Power Requirements     | 120V, 60Hz, 12A   |
| Power Consumption      | 1,500 Watts maximum   |

### PRINTER CONTROLLER SPECIFICATIONS (STANDARD)

|                           |   |
|---------------------------|---|
| CPU                       | Intel Celeron-M @ 600 MHz, embedded   |
| Memory                    | 1 GB RAM and 80 GB HDD standard (shared)  |
| Max. Print Speed          | C2828: 28-ppm BW/Full-Color<br>C3333: 33-ppm BW/Full-Color  |
| Print Drivers             | Standard: RPCS, PCL5c, PCL6, XPS for download<br>Optional: Adobe® Postscript® 3™ (includes PDF Direct Print), PS Driver for Mobile Printing   |
| Max. Print Resolution     | 1200 x 1200 dpi   |
| Standard Interfaces       | Ethernet (10Base-T/100Base-TX), USB 2.0, USB Host I/F   |
| Optional Interfaces       | Ethernet (1000Base-T), IEEE 1284/ECP Parallel, IEEE 802.11a/b/g<br>Wireless LAN, Bluetooth, USB 2.0/SD Slot   |
| Network/Operating Systems | Windows 2000/XP/Server 2003/Server 2008*/Vista; Netware 3.12, 3.2, 4.1, 4.11, 5.0, 5.1, 6, 6.5; UNIX; Sun Solaris, HP-UX, SCO OpenServer, RedHat Linux, IBM AIX; Mac OS 8.6 – 9.2x, OS X 10.1 or later; SAP R/3, NDPS Gateway; IBM iSeries; AS/400-using OS/400 Host Print Transform  |
| Advanced Features         | WSD printer Support, Advanced Print Queues (Sample Print, Locked Print, Hold Print, Stored Print), Black Overprint, CLP Simulation, Pantone Color Palette, Chaptering, Classification Codes, Mail-to-Print (requires Fax and PS3 options), PDF Direct Print (requires PS3 option), PictBridge® Support (requires Camera Direct Print Card option), Bonjour/DDNS Support |
| Utilities                 | SmartDeviceMonitor for Admin and Client; Web SmartDeviceMonitor; Web Image Monitor; Print Utility for MAC (w/Adobe PS3 option)  |

\*Server 2008 is not included on the driver CD. It is available via download from the Savin website.

### SECURITY SPECIFICATIONS

**DataOverwriteSecurity Unit (DOSS) (Optional):** Security feature that overwrites latent data on the system's hard drive after copy, print, scan and fax jobs

**Copy Data Security Unit (Optional):** Copies of prints made with this feature will be blacked out or embedded with a watermark to deter illegal copying

**HDD Encryption Unit (Optional):** Encrypts data on HDD, so data is secure even if HDD is stolen

**Other Security Features:** Network Protocol On/Off, IP Filtering, SNMP v3 Support, Encryption (Address Book, Password, PDF, SSL communication, S/MIME, IPsec Communication), Locked (Secure) Print, User Authentication (Windows/LDAP with Kerberos Authentication (External), Basic and User Codes (Internal)), 802.1.x Wired Authentication, WPA/WPA2 (Wi-Fi Protect Access Support) and more

### SCANNER SPECIFICATIONS (STANDARD)

|                          |  |
|--------------------------|--|
| Scanner Resolution       | 100 – 600 dpi; 1200 dpi for TWAIN only<br>Default setting: 200 dpi   |
| Scanning Speed           | 50 ipm BW and Full-Color (8.5" x 11" LEF/200 dpi)  |
| Auto Scan Size Detection | Glass: 11" x 17", 8.5" x 14", 8.5" x 11"<br>ARDF: 5.5" x 8.5" – 11" x 17"  |
| Scan Mode                | BW Text/Line Art, BW Text, BW Text/Photo, BW Photo, BW Grayscale, Full-Color Photo, Full-Color Text, Auto Color Select (ACS)   |
| Compression Method       | BW: TIFF (MH, MR, MMR);<br>Grayscale/Full-Color: JPEG  |
| Scan-to Modes Supported  | Scan-to-Email (with LDAP support);<br>Scan-to-URL; Scan-to-Folder (SMB/FTP/NCP); Network TWAIN scanning;<br>Scan-to-Media (USB/SD, optional);<br>WSD scanner (for Vista) |

### DOCUMENT SERVER SPECIFICATIONS (STANDARD)

|                       |                 |
|-----------------------|-----------------|
| Max. Stored Document  | 1,000 documents |
| Max. Pages/Document   | 1,000 pages     |
| Max. Stored Documents | 2,000 pages     |

### FACSIMILE SPECIFICATIONS (OPTIONAL)

|  |  |
|--|--|
| <b>Fax Option Type C5000 (standard on SPF model)</b> |  |
| Type   | ITU-T (CCITT) G3, Additional G3 (optional)   |
| Circuit  | PSTN, PBX  |
| Resolution   | 200 x 100 dpi, 200 x 200 dpi, 400 x 400 dpi (with optional fax SAF memory)                         |
| Modem Speed  | 33.6K – 2,400 bps w/Auto Fallback  |
| Compression Method                                   | MH, MR, MMR, JBIG  |
| Transmission Speed                                   | G3: Approximately 2 seconds/page (w/JBIG); G3: Approximately 3 seconds/page (w/MMR)                |
| Scan Speed   | 0.50 seconds/page LEF (Standard/Detail Mode); 0.94 seconds/page LEF (Super Fine Mode)              |
| Auto Dialing   | 2,000 Quick/Speed Dials, 100 Group Dials (500 locations each)                                      |
| Memory Capacity (SAF)                                | Standard 4 MB (approximately 320 pages); Maximum 28 MB (2,240 pages)                               |
| Additional Modes                                     | Internet Fax by E-mail (T.37); IP Fax (T.38); LAN Fax; Fax Forward to E-mail/ Folder; LDAP Support |
| Options  | Additional G3 Lines (up to 2);<br>Fax SAF Memory; Telephone Handset                                |

### ADDITIONAL ACCESSORIES

File Format Converter, Key Counter Bracket, JAVA VM Card for Embedded Software Architecture™ Applications, Optional Counter Interface, USB 2.0/SD Slot (for Scan-to-Media), Camera Direct Print Card, Fiery™ Print Controller

### SUPPLIES AND CONSUMABLES

|                              |                    |
|------------------------------|--------------------|
| Black Toner                  | 20,000 pages*      |
| Cyan, Magenta, Yellow Toners | 15,000 pages each* |

\*Toner yields based on 5% coverage)

[www.savin.com](http://www.savin.com)

#### Bringing Savin Value to Your Organization

Savin technology offers a diverse portfolio of solutions to help your organization stay competitive and move ahead. Let Savin show you how to empower your business to improve critical processes, keep information secure, ensure compliance and promote environmental sustainability while reducing the total cost of ownership.

♻️ Printed in U.S.A. on recycled paper.

Savin Five Dedrick Place, West Caldwell, NJ 07006

Savin® is a registered trademark of Ricoh Americas Corporation. All other trademarks are the property of their respective owners. Print speed may be affected by network, application or PC performance. Specifications and external appearances are subject to change without notice. Products are shown with optional features.

S2800

